



Entrepreneurship Cell

Overview:

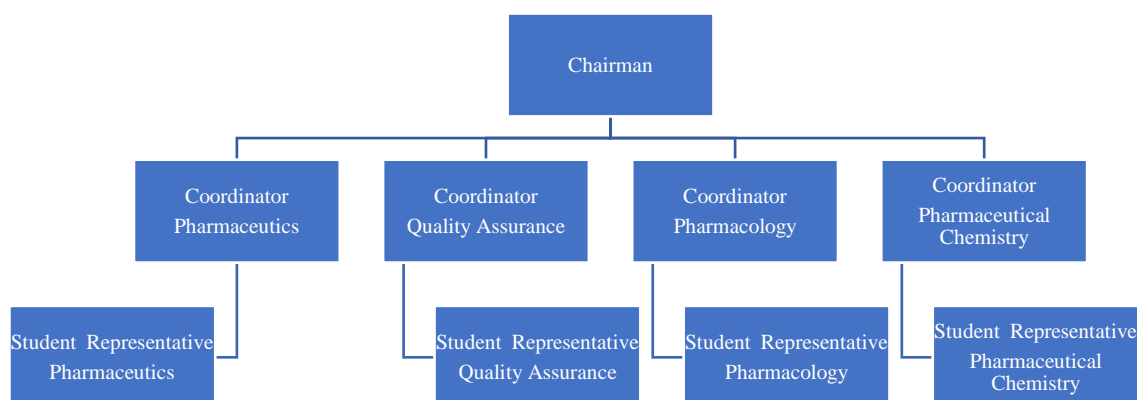
The Entrepreneurship Cell popularly known as EDC, at SDPC, Kim Campus is aimed at fostering entrepreneurial skills among the students on campus.

In the process of identifying, nurturing, training and establishing start-ups, EDC is involved in a wide range of activities.

Vision:

EDC is a consortium dedicated to find the entrepreneur in the students of the SDPC, Kim. EDC connects students with solid entrepreneurial skills, in the campus, to form a close-knit network, working together to spread the word of entrepreneurship. In EDC, the belief is simple; Entrepreneurship is not just a “you” and “me” game. It’s an “us” game which takes off successfully only when people come together. EDC promotes openness of knowledge, network, contacts and opportunities. Since its inception on 1st May 2010, it has successfully conducted several competitions of challenging formats, workshops, guest lectures and it has also provided mentors to several “now-successful” start-ups on campus.

Organizational Structure:





Entrepreneurship Development Cell SDPC, KIM



Events conducted:

Organized Guest/Self Lectures	
Dr. M N Noolvi, Principal SDPC, Kim	<i>Entrepreneurship & Innovation for Pharmacy 8th semester students</i> 02 nd March, 2015
Dr. Ramn Kapoor, Chairman, Transition patient services, LLC, USA.	“How to become entrepreneur: Industrial entrepreneurship” 02 nd August, 2016
Shanti Niketan Business School, Ahmedabad	18 th January 2018
Dr. Anand Deshmukh Associate Professor, Department of Pharmaceutics, SDPC, Kim	<i>Entrepreneurship & Innovation for Pharmacy 8th semester students</i> 12 th May, 2017
Coordinator attended Technical-talks	
Speaker of the Event: Prof. Raghuram Rao Akkinpally, Director (NIPER), Punjab.	"Start up and Incubation of Young Pharmaceutical Entrepreneurs" Organized by Center of Pharmaceutical Studies and Drug Delivery Technology on 9th September, 2017 at GTU Chandkheda Campus. Time: 12:30 PM to 01:30 PM



 **Entrepreneurship
Development Cell
SDPC, KIM**



Facilities:

Facilities available for Entrepreneurship are:

- Business related guidance from head of institute and coordinators.
- Networking opportunities.
- Client monitoring and tracking.
- Evaluating and recommending, and access to, funding sources.
- Training and education on business and related issues.
- Access to a library of business related materials (physical and online).
- Trade mark, copyright, patent, and related legal advice.
- Access to technology and scientific research.
 - API synthesis (20L reactor, Heidolph Single station equipment)
 - Formulation and Development (All-purpose equipment, High Speed Homogenizer, Dissolution apparatus, Stability chamber)
 - Analytical testing (SDPARC, HPLC, Gas Chromatography)
 - Pharmacological Activity (AFC)
- Working relationships with local industries (CPA Pharma Pvt. Ltd.)
- It offers Starting Pharma unit, Retail/ Wholesale/ loan License/testing lab



Entrepreneurship Development Cell SDPC, KIM



Achievements:

Sr. No.	Name of the Student/Alumni/entrepreneur	Graduating year	Name of the company/medical Store incubated
1	Mr. Chandrahas Vashi	2010	Globela Industries, Surat
2	Mr.Kumbhani Ashish	2012	Ajans Life Sciences
3	Ms.Bhalala Ankita	2012	Ajans Life Sciences
4	Ms.Bharucha Jinal	2012	Ajans Life Sciences
5	Mr.Nakrani Kishan	2012	Medita Pharma
6	Mr. Nilesh Avaiya	2012	Avi Son's
7	Mr. Chirag Gohil	2013	Ganesh Enterprises
5	Mr. Girish Malaviya	2014	Wholesale agency, Surat
6	Mr.Praghesh Thummar	2014	CPA Pharma, Surat
7	Mr. Rishabh Chauhan	2016	Rishabh Medical Store
8	Ms. Patel Akshita	2016	Maruti Medical Store
9	Mr. Sanjay Kalsariya	2017	Medical Store